



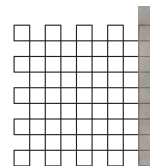
2022 y 2023 Full HD

[illegible]

Transformation is at the heart of what we do in campus ministry. We know that individual lives of college students involved in our ministries are transformed. We know that the staff who commit to working with and serving alongside these students are transformed. And, we know that our college campuses across the state and across the country are transformed. God's power to bring about transformation through the ministries and the work of the UM Commission is quite apparent in both the individual students whose lives are changed and in the communities where they live, work, study, grow, serve, and love.

Through vital worship and mission experiences, discipleship meetings, and leadership and spiritual development, our campus ministers and the faith leaders on our campuses do amazing work day in and day out to provide students with opportunities to grow in their connections to God and in their connections to one another. Each of these activities is designed to transform lives so we might see God's kingdom come in our midst.

I continue to be filled with gratitude for the work of our ministries and the commitment that so many people make to see this work come to life. May we seek and find unity in the purpose, hope in the call, and joy in the work of supporting the transformation of the lives of college students through Jesus Christ.



DR. BEAU SEAGRAVES
DB · BEVN 2EVCBAVE2

////////// PRESIDENT, UM COMMISSION



The ministry of the **UGA Wesley Foundation** has had a profound and lasting impact on our family. Our two sons and our daughter were all deeply involved in worship, small groups and missions through UGA Wesley. After graduating, our younger son, Justin, spent an additional three years as a ministry intern. All total, the Patton kids spent a combined 15 years under the ministry of Bob Beckwith and the UGA Wesley Staff.

Here are just a few of the blessings that our children received from being a part of UGA Wesley:

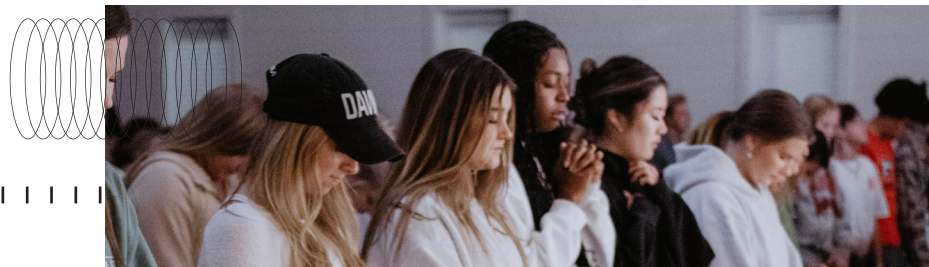
SPIRITUAL MATURITY | The emphasis on small groups and discipleship is clear and consistent, and we saw our kid's mature in their faith.

AUTHENTIC CHRISTIAN COMMUNITY | lasting friendships with other students.

AN ETHOS OF SERVICE | vocation is understood as a way to serve others for Christ.

WORSHIP AS A WAY OF LIFE | UGA Wesley creates an environment for meaningful worship that helps students establish the rhythms and commitments for a lifetime.

Additionally, I think that some of the credit for the academic successes of our three children is due to UGA Wesley Foundation. UGA can be a very difficult and intense academic environment. However, the Wesley Foundation always provided our kids with a positive atmosphere, encouragement, discipline and focus during their four years of undergraduate work. Again, our whole family has been blessed by UGA Wesley!



REV. STEVE PATTON
BEA' 21EAE B'ALLON

NORTHWEST DISTRICT SUPERINTENDENT
SOUTH GEORGIA CONFERENCE

I arrived on the campus of Young Harris in August of '22 having worked with college students before, and excited to rejoin this vital work in God's Kingdom. However, it became clear to me that this was a very different type of work than I had been blessed to do before. As a chaplain in this context, I sort of stand alone, held out by the church as a representative.

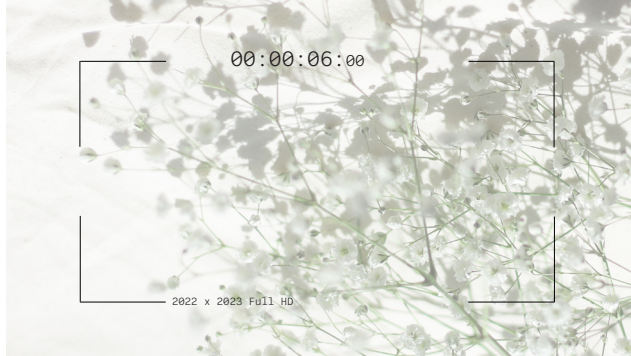
It's a daunting and humbling task. Yet, in these few months I have counseled, laughed, taught in college classrooms, led retreats, and even wept with students over the hurt in their lives. Transformative? That may be too small a word. In being called to what feels like an impossible task in this culture, I have leaned on Jesus more than ever in my ministry career, and Jesus has been so very faithful.

I am learning the joy of what Henri Nouwen called "Irrelevance in Christian Leadership" and finding that Jesus is present in every conversation, every email, every question, and every inch of my campus. It's in those small and seeming irrelevant places that Jesus seems to hang out, and I think its where revival might live. I can't wait to find out.



ADAM DANIELS
ADAM DANIELS

CHAPLAIN
YOUNG HARRIS COLLEGE WESLEY



College is one of the most influential time periods a person can go through, and I am honored to serve students during this pivotal time. Working with college students has its struggles because the very people you want to help sometimes don't want it! However, in campus ministry, you learn that it is all a façade. Every student that steps foot on your college campus is hungry and eager to learn how to live a good life.

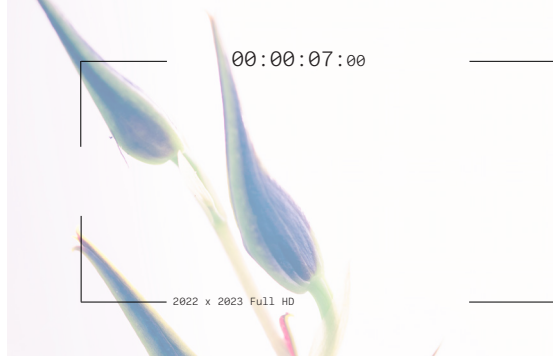
I have had the opportunity to minister to students from various backgrounds, yet one thing remains consistent, they want to be taught. When I first arrived in July of '22, my first question to my leaders was, "What do you want? To my astonishment, I received a unanimous answer of "discipleship". Many view college students as lazy and unwilling to commit. However, my experience tells me differently. Since I have been here, my students have had struggles, yes, but that is to be expected. My job is to teach them how to be mentally, emotionally, physically, and spiritually healthy people!

This semester we have had amazing worship, small groups, and hospitality events, and this is just the beginning! We are currently rewriting our structure for leadership and how someone can grow deeper in relationship with Christ and community, please be in prayer for our future as we continue to cultivate an intentional discipleship culture here at GS Wesley!



ALBERT WILLIAMS
ALBERT WILLIAMS

DIRECTOR
GEORGIA SOUTHERN UNIVERSITY WESLEY



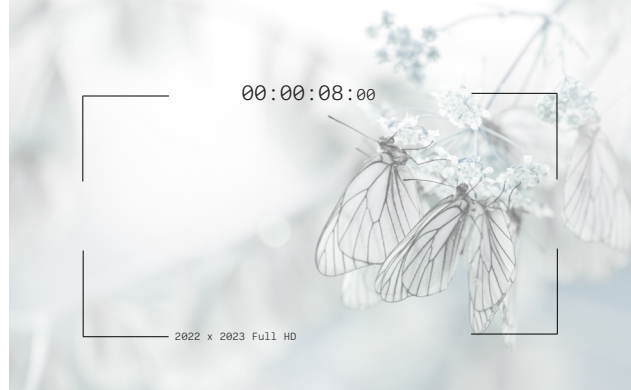
As the new Chaplain and Coordinator for Faith and Service at Wesleyan College, I walk on Wesleyan's campus every day with an overwhelming sense of gratitude. To be journeying alongside students in such a transformative time in their lives is both a blessing and a responsibility. I come to the higher education context after serving as a chaplain in healthcare for the past couple of years.

While the contexts might sound like they have nothing in common, both are abundant grounds for spiritual questions and conversations. My spiritual care practice consists of holding stories, providing care, and exploring spirituality, identity, and life with students. Even in my short time as Chaplain at Wesleyan, I have met students who are discerning their vocation, who have experienced trauma, who are grieving the loss of their dreams, who are passionate about creating spaces of worship, and who are exploring who they are. To be called into this role of sacred story catcher is an honor. In this season, I sense that I am, just as the students are, being transformed in my time at Wesleyan College.



REV. RACHEL HARTMAN
 BEL · BACHEF HAVLWAV
 CHAPLAIN AND COORDINATOR OF FAITH AND SCIENCE
 WESLEYAN COLLEGE

I can vividly remember the first time I walked up to the imposing front doors of Centenary UMC across the street from Mercer University. As a first-year student, I was so intimidated by the idea of walking into a completely unknown community that I almost didn't open the door. When I finally built up enough nerve to step inside, I was immediately welcomed by a wonderful community of people who became extraordinarily influential in my life.



I experienced a radical transformation during my college years, and much of my growth was because of the people of Centenary. At our heart, we are dedicated to creating spaces that invite students into the kind of formative community that Centenary created for me. Our collegiate ministries are committed to lowering the entry threshold, engaging students in meaningful discipleship, encouraging them to disciple others, and then sending them out to share their lives with the world.

It is a Holy and powerful calling to share Christ and ourselves with college students. We could not do this work without our incredible staff, gifted student leaders, and faithful supporters like you. I am grateful I opened those doors to Centenary, and I hope you will join me in giving thanks for all that we have experienced in 2022 and help us open even more doors for students in 2023!



REV. DR. MICHAEL MCCORD

BEA · DB · MICHAEL MCCOYD

EXECUTIVE DIRECTOR // UM COMMISSION

LEAD 44



The UM Commission on Higher Education launched Lead44 during the summer of 2022, which is a Leadership Coaching Program designed to educate, equip, and train program participants as leadership coaches. Our Pilot Cohort, which currently includes eighteen participants led by seven faculty members, started in August 2022 and will conclude in January 2023.

At the conclusion of our Pilot Cohort, Lead44 will apply to the International Coaching Federation (ICF) to be accredited as a Level 1 Coach Training Program. Once accredited, all participants who successfully finish a Lead44 cohort will receive credit for completing a Level 1 Accredited Coach Training Program and be able to pursue their Associate Certified Coach (ACC) credential through ICF. This includes our Pilot Cohort participants who will be given credit retroactively following our accreditation, which will be well deserved as they have played a tremendous role in perfecting Lead44's approach so that it will be even more effective and transformative for future cohort participants.

We believe that Lead44 will significantly impact leaders as they deploy a coaching approach that expands the capacity and potential of those they serve. Therefore, we invite everyone to go to Lead44.com to learn more about our Leadership Coaching Program and discern if participating in one of our future cohorts would be appropriate for your ongoing leadership development.



REV. BRAD FARRINGTON
BEA' BBAD EABBINGION

LEAD 44 PROGRAM DIRECTOR

Our creative teams are comprised entirely of graduates from our Wesley Foundation and Collegiate Ministry programs and serve as a launching point to give them industry experience and expand their portfolios of work while helping to supplement their income in the new “Gig Economy”.

This year the Foundry has again met its financial goals for the year and is on track for our long term goal of covering our administrative overhead expenses so that in the future every cent of every dollar donated to collegiate ministry goes directly to our mission. Thank you for your continued support of our students and ventures which enable us to help create the transformational spaces for college students to respond to the call of God on their lives.

EVAN DEYOUNG
EVAN DEYOUNG
DIRECTOR OF NEW INITIATIVES
UM COMMISSION

00:00:11:00

FOUNDRY

CREATIVE STRATEGY

Foundry's crew has years of experience across a wide range of disciplines, and can come alongside your organization to coach, train, and consult. Let us assess where you're at, find where you'd like to be, and determine what we can do to help you get there.

DESIGN

Our design team is your creative problem solver. We'll walk with you every step of the way, whether it's simple graphics or a full brand development.



PRODUCTION

At Foundry, we know that a good plan and a sharp look doesn't always get the job done. Our production team will help you translate what you're about into content and help you build out your equipment so you can keep creating content for the people you serve.

TRANSFORMATIONAL TESTIMONIES

2022 x 2023 Full HD

01

What do you, or will you, remember most about your time at Wesley, or a United Methodist chaplaincy program?

"Incredible mentorship by the Director at Georgia Tech, Dr. Bill Landiss. His ministry and friendship had a profound impact on my life." - Andy Thomas



SUZANNE AKINS

SUSANNE AKINS

Director of Camps and Retreats
South Georgia Conference UMC

"After exploring what seemed like every campus ministry offered by UGA, it was a personal invite from a trusted friend that got me to the Wesley Foundation. I was intimidated by the amount of people but each week I attended, I found more and more community. I was challenged and stretched like I had never been and I hungered for it."

"Dr. Miles made me feel seen and loved, which gave me the confidence to be myself and do things that I never thought I was capable of doing. She inspired me to love and serve others in my community." - Olivia Stewart

"Wesley at Georgia College was a home away from home to me during my years there. I will always remember the way I felt while at Wesley - loved, safe, and ultimately at home." - Jen Deese

"One of my very favorite things in my time at LaGrange College was Sunday night Chapel. It was what I looked forward to each week." - Hillary Radcliffe

"I remember most feeling accepted, welcomed, given a place to grow and safely worship. Dr. T fostered an environment that made my matriculation memorable and meaningful. She gave me a purpose and platform."
- Adoris Gibbs

02

What difference did being involved with Wesley, or a United Methodist chaplaincy program, make or will make for you?



JEN DEESE
JEN DEESE
Living + working
in Monroe, Ga
Active at
12 Stone Church

"For me, the ministry was so much more than a service on Wednesday nights. It gave me a place to call home and gave me life-long relationships that I still rely on daily. Not only did the ministry help me to grow spiritually, it prepared me for life post-college. During my time as a student, I was provided a safe & loving place to meet people, form friendships, ask questions, and learn more about the Lord, myself & my spiritual walk." - Jen Deese

"It was an incredible place for my Faith development."
- Andy Thomas



"That sense of belonging and being seen gave a a confidence in myself that didn't exist prior. The programs I was involved in allowed me to grow as a person and are largely responsible for who I am today." - Hillary Radcliff

"Being involved with a United Methodist chaplaincy program made me more passionate and comfortable about my relationship with God. I am no longer scared to talk about God in my friendships and relationships. I have learned to be open minded and opened hearted." - Olivia Stewart

"It has been close to 50 years ago - I remember feeling like Wesley was a continuation of my growth from the UMYF. We had a safe environment for discussions with a sense of freedom and support." - Anna Harris

"I was able to be me authentically and have fun while being with likeminded people. It solidified that I was worthy of friendship and had the possibility to make more friends. It helped me be a better leader and continue to grow in Christ during my matriculation." - Adoris Gibbs

There are a lot of people that make Wesley happen on our campuses (parents, staff, supporters, financial supporters, etc). What would you want them to know about the ministry and what it has meant to you?

“The Wesley Foundation provided a strong Christian community that constantly supported and challenged me. It meant so much to have a group of ministers present who spoke affirmations over me and helped me to determine my path in life. I also greatly appreciate the personal and professional development we did, with workshops on Meyers-Briggs, Gallup StrengthsFinder, and the Enneagram. I feel that bridging the gap between personal and spiritual development was something unexpected, yet tremendously helpful.”



CHBIS DEVLAM

“College students are desperate to find a place to belong. They are ready to explore their faith away from what they’ve always known. They need a place to worship unashamedly, to ask questions and to find grace in a safe space. That is the heartbeat of Wesleys.” - Suzanne Akins

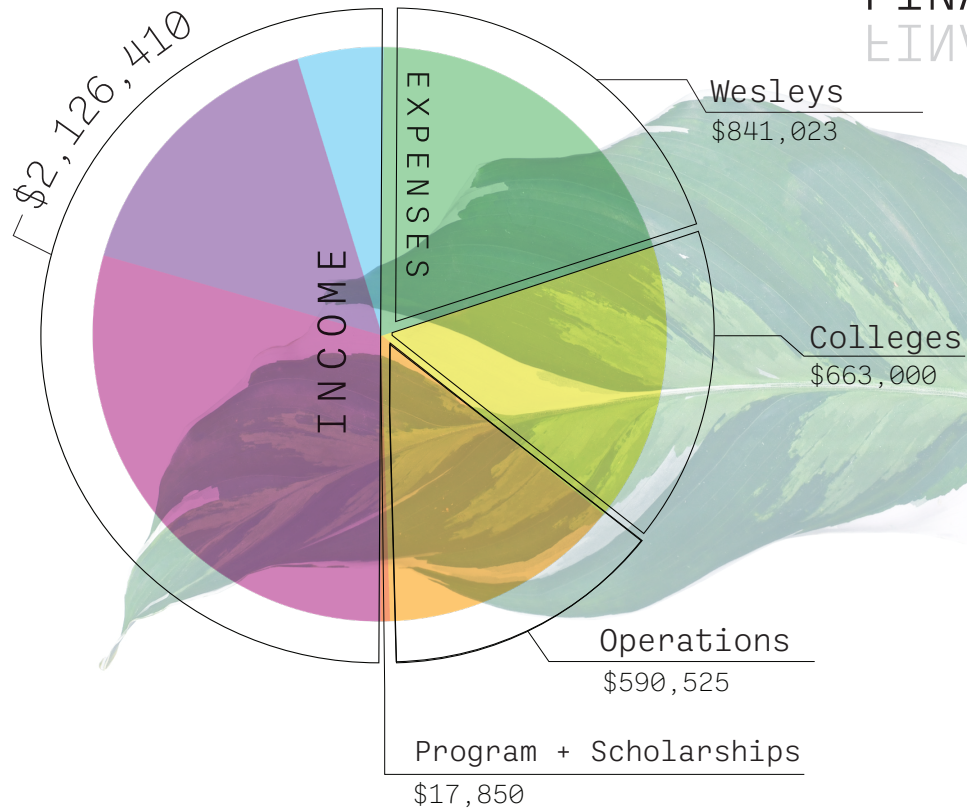


"I am thankful for their devotion to the lives of young people. I am thankful for their hearts that want to serve and love on college kids who are searching to find out who they are. I'm thankful for the encouragement and support they shared. People who take the time to make an impact in the lives of college kids are amazing and they truly make a difference."

Elementary School Teacher

Active in Children's and Media Ministries

FINANCIAL OVERVIEW



INCOME BREAKDOWN

\$1,247,547 North Georgia

\$673,725 South Georgia

\$205,138 Other



In 2022, we partnered with ministries on these campuses across the country:

Andrew College • Clark Atlanta University • Emory University • LaGrange College • Oxford College • Paine College • Reinhardt University • Wesleyan College • Young Harris College • Augusta University • Coastal Georgia • Columbus State University • Georgia College and State University • Georgia Gwinnett College • Georgia Southern University, Savannah • Georgia Southern University • Georgia Southwestern State University • Georgia Tech • Kennesaw State University • Mercer University • Middle Georgia State University • Savannah State University • University of Georgia • University of North Georgia • University of North Georgia, Gainesville • Valdosta State University • University of West Georgia • Mississippi Valley State University • Jackson State University • Southwest Mississippi Community College • Mississippi State University • Delta State University • East Central Community College • Ole Miss • University of Southern Mississippi • Mississippi Valley State University • Mississippi Gulf Coast Community College, Perkinston • East Mississippi Community College • Mississippi University for Women • Southwest Mississippi Community College • Hinds Community College • Hinds Community College, Utica • Holmes Community College • Itawamba Community College • Jones County Junior College • Mississippi Gulf Coast Community College, George County Campus • Mississippi Gulf Coast Community College, JD Campus • Northeast Mississippi Community College • Northwest Mississippi Community College • Alcorn State University • Millsaps College • University of Southern Mississippi, Gulf Coast • Norfolk State University • Old Dominion University • Christopher Newport University • College of William & Mary • Randolph-Macon College • Virginia State University • Longwood University and Hampden-Sydney College • Ferrum College • University of Virginia • George Mason University • Virginia Community College Ministries • Virginia Tech • James Madison University • Bridgewater College • Eastern Mennonite University • Virginia • Wesleyan University • Shenandoah University

